

HUC Boundary Key
Fifth Code HUC boundary
Fourth Code HUC boundary

Background Data Sources:
Hydrography was obtained from various sources (BLM, USFS, USGS).
1:100K Watershed boundaries compiled to 1:100K from NRCS
and USFS. 8-Digit Subbasin boundaries are USGS delineations
revised by NRCS.
Contour lines are derived from 1:24K DEM data from USGS and USFS.

Alluvium/Depositional
10 Recent Deposits, Coarse
14 Recent Deposits, Fine
11 Lacustrine
12 Glacial Terraces, Fans, Outwash, Coarse
13 Glacial Terraces, Fans, Outwash, Fine
17 Loose Deposits
80 Tertiary Sediments, Fine
88 Tertiary Sediments, Coarse
69 Pediment, Undifferentiated
8 Glacial Deltaic Sediments
8 Sand Hills and Sand Dunes
99 Lakes and Reservoirs

Belt Series
20 Breaks
28 Dissected Breaks
60 Mountain Slopes and Ridges
70 Mountain Ridge Tops
80 Rolling Hills
40 Steep Mountain Slopes, Glaciated
50 Mtn Slopes and Ridges, Glaciated
47 Glacial Trough Walls
58 Glacial TRL, Highly WX

Granitics
21 Breaks, Highly WX
22 Breaks, Weakly WX
61 Mtn Slopes and Ridges, Highly WX
71 Mountain Ridge Tops, Highly WX
81 Rolling Hills
62 Mtn Slopes and Ridges, Weakly WX
72 Mountain Ridge Tops, Weakly WX
41 Steep Mtn Slopes, Glaciated
51 Mtn Slopes and Ridges, Glaciated
46 Glaciated Trough Walls
45 Mtn Slopes, Weakly Glaciated

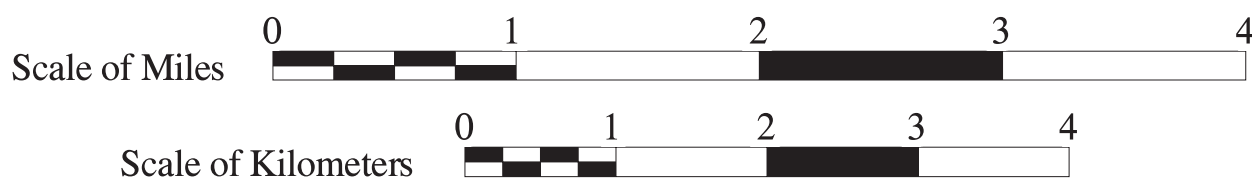
Geologic Material - Landform Categories
Sandstones And Shales
25 Breaks
36 Steep Mountain Slopes
68 Mountain Slopes and Ridges
65 Mountain Slopes and Ridges, Salt Sedimentary
74 Mountain Ridge Tops
44 Steep Mtn Slopes, Glaciated
53 Mtn Slopes and Ridges, Glaciated
Shales, Siltstones, Sandstones
1 Rolling Plains
2 Rolling Plains, Glaciated
3 Dissected Plains
4 Dissected Plains, Glaciated
5 Badlands
6 Eroded Uplands (Volcanic Tuffs)
7 Plateaus and Buttes

Carbonates
27 Breaks
37 Steep Mountain Slopes
66 Mountain Slopes and Ridges
43 Steep Mtn Slopes, Glaciated
Quartzites and Calc - Silicates
29 Breaks
67 Mtn Slopes and Ridges, Highly WX
75 Mountain Ridge Tops
35 Mtn Slopes and Ridges, Weakly Glaciated

Gneiss and Schists
23 Breaks
26 Breaks, Mod. WX
63 Mountain Slopes and Ridges
59 Mountain Slopes and Ridges
77 Mountain Ridge Tops
84 Rolling Hills, Highly WX
85 Rolling Hills, Mod. WX
38 Steep Mtn Slopes, Glaciated
57 Mtn Slopes and Ridges, Glaciated

Volcanics
24 Breaks
34 Steep Mountain Slopes
64 Mtn Slopes and Ridges
73 Mountain Ridge Tops
82 Rolling Hills
42 Steep Mtn Slopes, Glaciated
54 Mtn Slopes and Ridges, Glaciated
Mass Failures
90 Mass Washed
92 Cultural Deposits

StreamGradient Key
Gradient 0 to less than 2
Gradient 2 to less than 4
Gradient 4 to less than 6
Gradient 6 to less than 10
Gradient greater than or equals 10
24k Quad Locator



DISCLAIMER
This map is to be used as a primary reference source and is not intended for use in site-specific planning. This is public information and may be interpreted by organizations, agencies, units of government, or others based on needs; however, they are responsible for the appropriate application.